

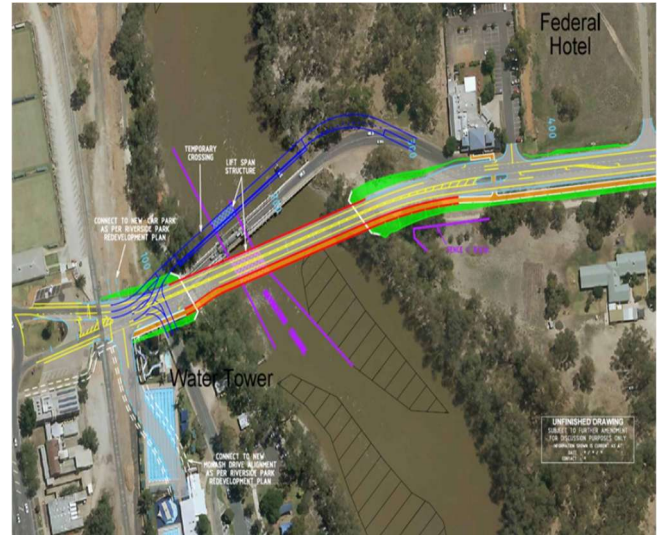
## SWAN HILL BRIDGE

<b>CLIENT:</b>	TfNSW and VicRoads
<b>LOCATION:</b>	Swan Hill
<b>VALUE:</b>	\$60million
<b>DISCIPLINE:</b>	Bridge
<b>PERIOD:</b>	2015-2023

Between 2007 and 2009, Victoria's Department of Transport and Planning (formerly Department of Transport) led investigations to identify the best location for a new river crossing.

In 2012, the NSW Government published *Timber Truss Road Bridges - A Strategic Approach to Conservation*. This strategy identified that Swan Hill Bridge was to be retained. In 2019 Swan Hill Bridge's status was changed and it was added to the list of bridges to be removed.

MLEI Bridge has provided heritage and technical support in relation to the existing bridge and options for a relocated bridge, including advice and support regarding movable spans.



### MLEI ROLE

- Engineering heritage
  - S170
  - Heritage and engineering assessment
- Bridge rehabilitation
  - Strategic options
  - Do-nothing, strengthen, rehabilitation and upgrade options
- Stakeholder liaison
- Technical support including but not limited to movable spans

### CLIENT REFEREE

<b>NAME:</b>	Jonathan Tasker
<b>POSITION:</b>	Senior Project Manager
<b>PHONE:</b>	02 6923 6550
<b>EMAIL:</b>	<a href="mailto:south.west.projects@transport.nsw.gov.au">south.west.projects@transport.nsw.gov.au</a>

